

Notice of Development Review

The Columbia River Gorge Commission is seeking comment on the following development review application:

FILE NUMBER:	C23-0006
PROPOSAL:	The Columbia River Gorge Commission has received an application for a roof mounted solar array.
APPLICANTS:	Charles & Valerie Fowler
LANDOWNERS:	Charles & Valerie Fowler
SIZE and LOCATION:	The subject parcel is approximately 55.95 acres in size and located 381 Old Highway 8, and is described as Tax Lot Number 03-12-3000-0004/00 in Section 30, Township 3 North, Range 12 East, Willamette Meridian, Klickitat County, Washington.
LAND USE DESIGNATION:	Special Management Area (SMA) – Agriculture (160)
NOTICE DATE:	August 30, 2023
COMMENT DEADLINE:	September 20, 2023

The application and supporting documents are available for review Monday through Thursday from 8:00 a.m. to 5:00 p.m. at the Gorge Commission office at 57 NE Wauna Avenue, White Salmon, Washington. The application and supporting documents are also available on the Gorge Commission's website at <http://www.gorgecommission.org/land-use/pending-applications/>.

This application will be reviewed for consistency with the Columbia River Gorge Commission's Land Use Ordinance (Commission Rule 350-082). The Gorge Commission may consider comments about consistency with *Management Plan for the Columbia River Gorge National Scenic Area* and the Columbia River Gorge National Scenic Area Act, 16 U.S.C. §§ 544 - 544p. Copies of these authorities are available on the Gorge Commission's website at <http://www.gorgecommission.org/about-crgc/legal-authorities/>.

Comments may be mailed to the Gorge Commission office at P.O. Box 730, White Salmon, WA 98672 or emailed to info@gorgecommission.org. All comments received are public

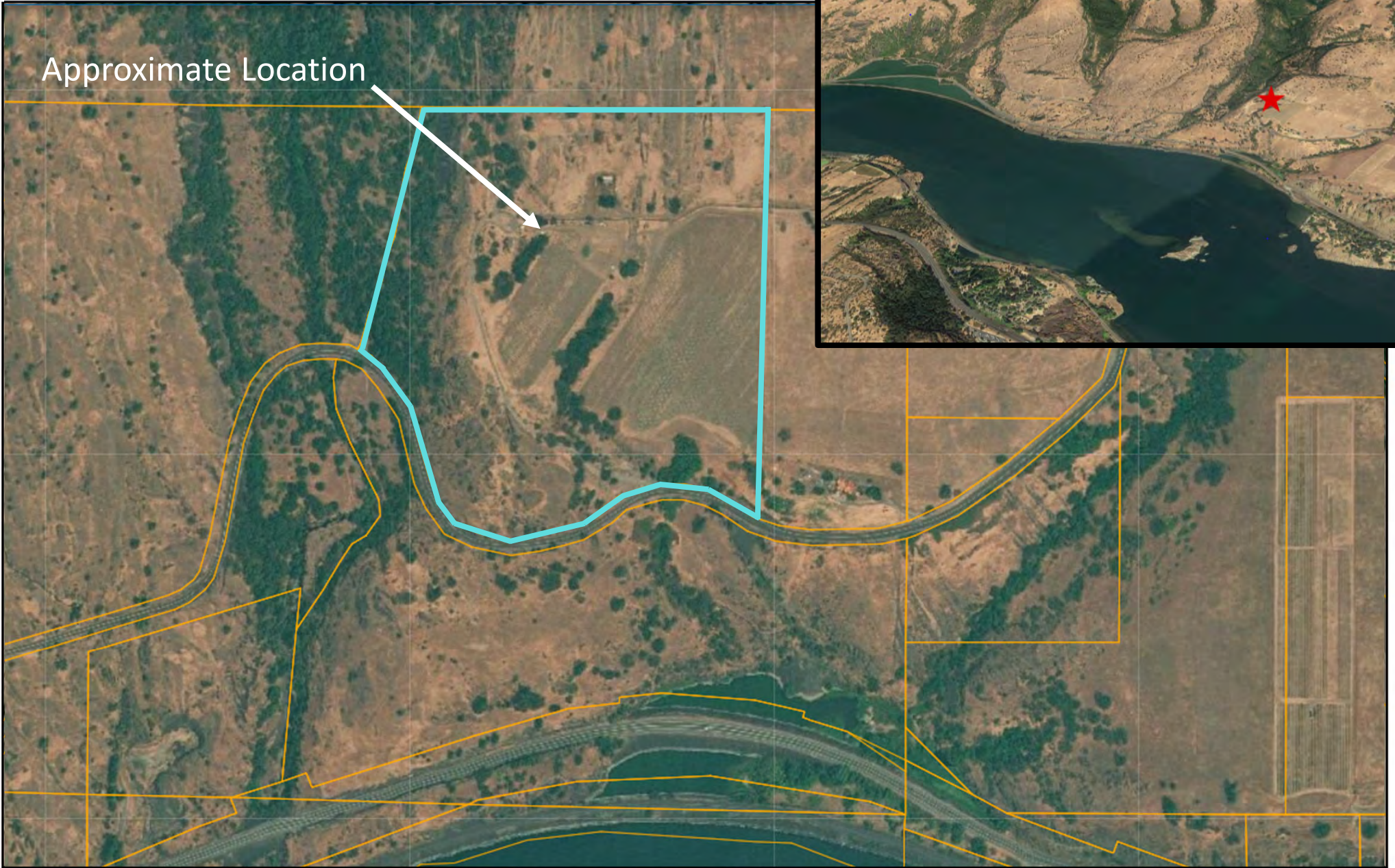
records and will be provided to persons who request a copy in accordance with the Gorge Commission's rule governing public records (Commission Rule 350-12).

Consistency with the National Scenic Area Act does not imply or ensure compliance with any other applicable local, state, or federal law.

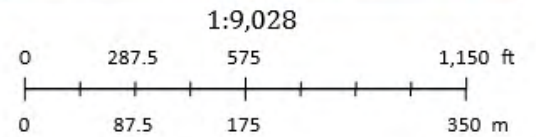
If you have any questions, please contact Bryce Guske at (509) 713-9622 or by email at bryce.guske@gorgecommission.org.

C23-0006 Fowler

Approximate Location



C23-0006 Fowler
381 Old Highway 8
Section 30, Township 3N, Range 12E
Tax Lot: 03123000000400



Esri, HERE, Garmin, © OpenStreetMap contributors, and the GIS user

Columbia River Gorge Commission