

# Notice of Development Review

**The Columbia River Gorge Commission is seeking comment on the following development review application:**

<b>FILE NUMBER:</b>	C23-0004
<b>PROPOSAL:</b>	The Columbia River Gorge Commission has received an application for a new 30' x 60' (1800 square foot) agricultural building.
<b>APPLICANTS:</b>	Dave Sauter and Kenneth Sorenson
<b>LANDOWNERS:</b>	Kenneth and Brenda Sorenson
<b>SIZE and LOCATION:</b>	The subject parcel is approximately 61 acres in size and located adjacent to Canyon Road, and is described as Tax Lot Number 03-12-2700-0002/00 in the northwest quarter of Section 27, Township 3 North, Range 12 East, Willamette Meridian, Klickitat County, Washington.
<b>LAND USE DESIGNATION:</b>	General Management Area (GMA) – Large-Scale Agriculture (160)
<b>NOTICE DATE:</b>	June 14, 2023
<b>COMMENT DEADLINE:</b>	July 14, 2023

The application and supporting documents are available for review Monday through Thursday from 8:00 a.m. to 5:00 p.m. at the Gorge Commission office at 57 NE Wauna Avenue, White Salmon, Washington. The application and supporting documents are also available on the Gorge Commission's website at <http://www.gorgecommission.org/land-use/pending-applications/>.

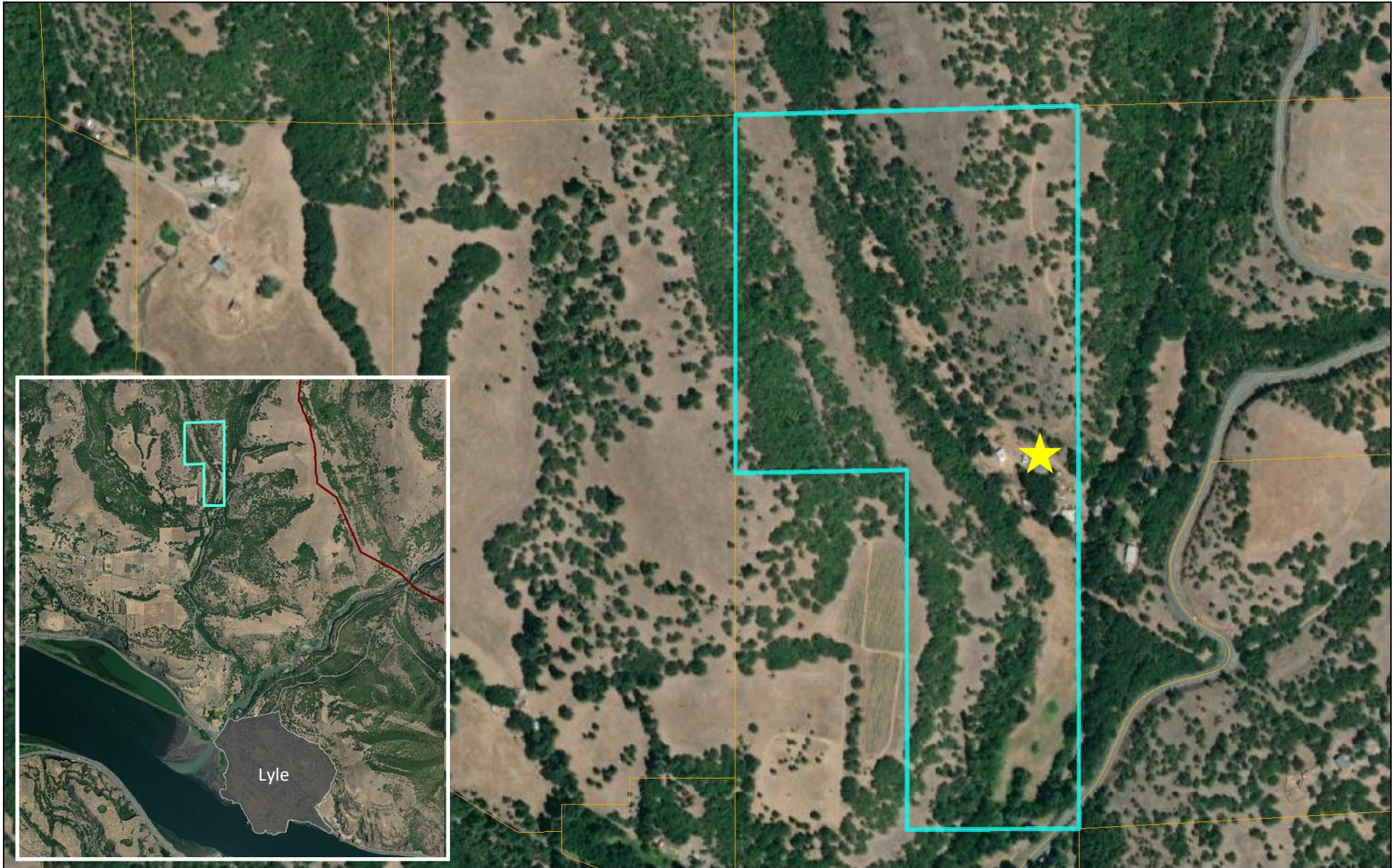
This application will be reviewed for consistency with the Columbia River Gorge Commission's Land Use Ordinance (Commission Rule 350-082). The Gorge Commission may consider comments about consistency with *Management Plan for the Columbia River Gorge National Scenic Area* and the Columbia River Gorge National Scenic Area Act, 16 U.S.C. §§ 544 - 544p. Copies of these authorities are available on the Gorge Commission's website at <http://www.gorgecommission.org/about-crgc/legal-authorities/>.

Comments may be mailed to the Gorge Commission office at P.O. Box 730, White Salmon, WA 98672 or emailed to [info@gorgecommission.org](mailto:info@gorgecommission.org). All comments received are public records and will be provided to persons who request a copy in accordance with the Gorge Commission's rule governing public records (Commission Rule 350-12).

Consistency with the National Scenic Area Act does not imply or ensure compliance with any other applicable local, state, or federal law.

If you have any questions, please contact Bryce Guske at (509) 713-9622 or by email at [bryce.guske@gorgecommission.org](mailto:bryce.guske@gorgecommission.org).

# C23-0004 Sauter & Sorenson Notice Map



**Kenneth and Brenda Sorenson**  
**21 Sorenson Rd, Lyle, WA**  
**NE1/4 Section 27, T3N, R12E, W.M.**  
**Taxlot: 03-12-2700-0002/00**

