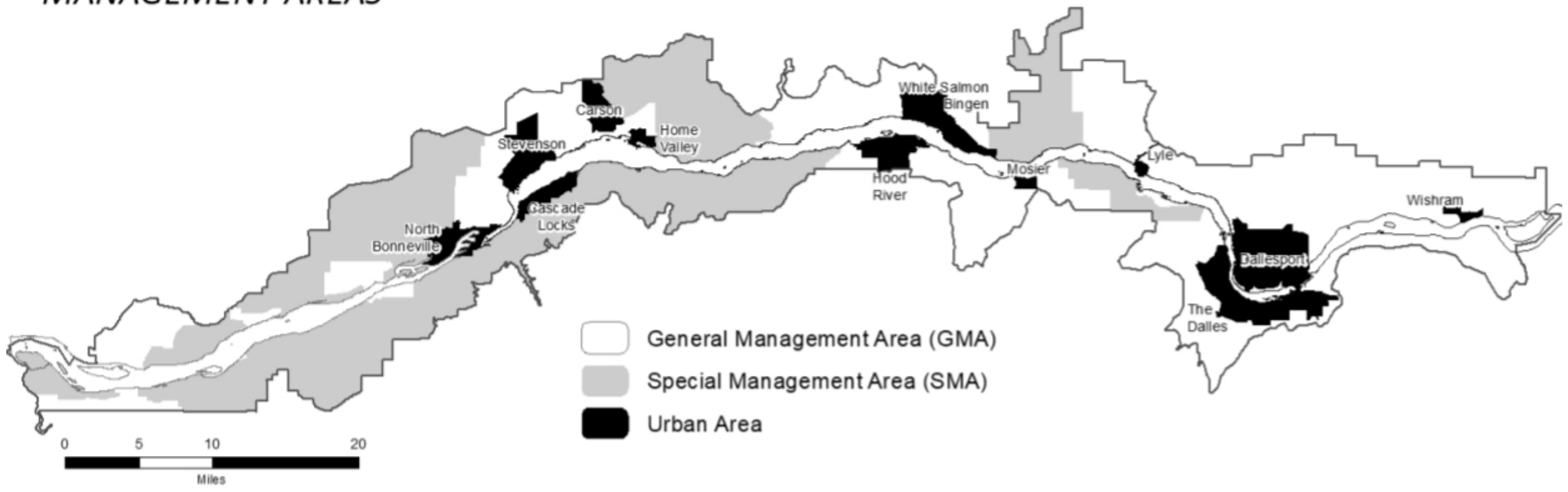
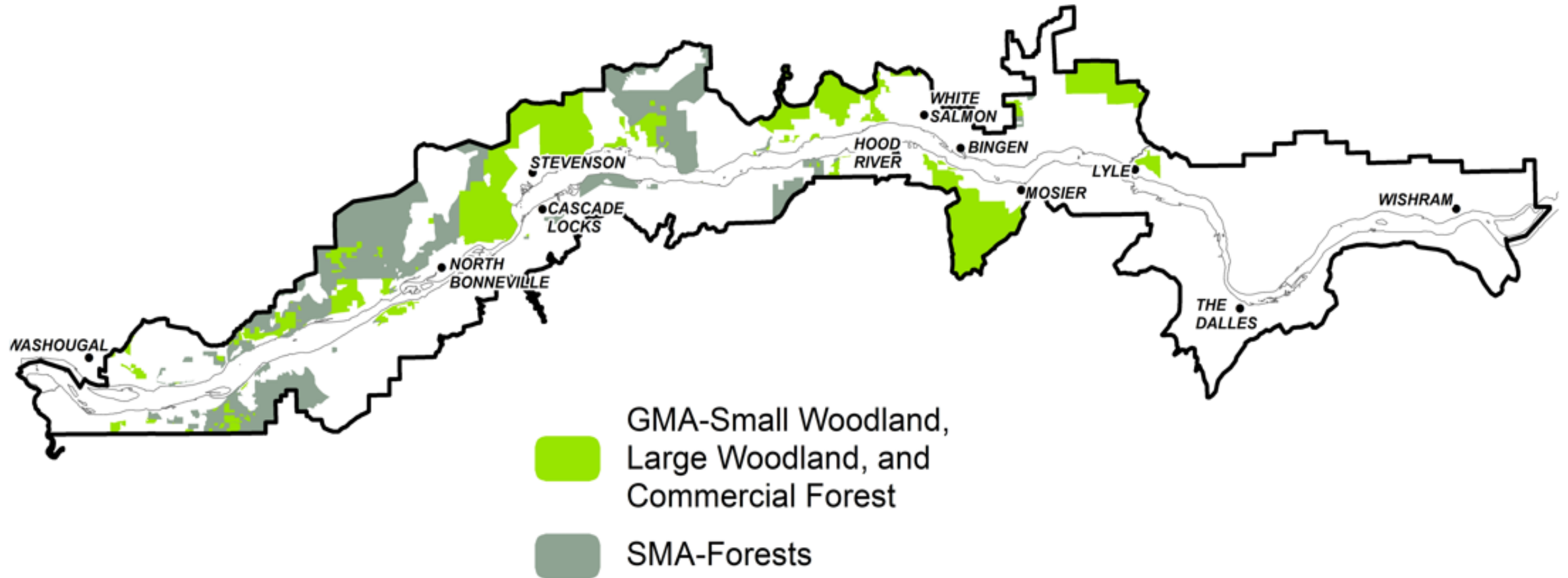


MANAGEMENT AREAS



FOREST LAND USE DESIGNATIONS IN THE NATIONAL SCENIC AREA



Interactive web maps:

<http://www.gorgecommission.org/scenic-area/maps/>

Management Plan forest protections

Land Use Designations maintain forest lands in forest

- Limits conversion
- New residences are not permitted in Large Woodland or Commercial Forest (new policy)

Large minimum parcel sizes

- Properties cannot be split up

Fire protection policies protect forests from ignitions

- Home design, siting, materials
- Raising awareness of Firewise principles

What about forestry?

The National Scenic Area Act (federal legislation) protects the rights of non-federal forest landowners provided by state laws in the GMA

- In the GMA, forest practices are managed under either Washington or Oregon's Forest Practices Act (ODF or DNR).
- In the SMAs, forest practices are managed under the state FPAs and reviewed by the U.S. Forest Service for consistency with the Management Plan.
- Forest practices, except for resource enhancement projects to improve forest health, are not allowed in designated Open Space.

Approaches to Climate Adaptation in NSA Forests

Ecological Resilience

Restoring forests by thinning overstocked stands

Reducing ladder fuels and reintroducing fire

Fire Prevention

Keeping homes out of forests through land use regulation

Public campaigns to prevent fires from starting

Community Protection

Hardening infrastructure and protect structures from fire

Emergency response plans and programs

Approaches to Climate Adaptation in NSA Forests

Example climate change actions considered by the Commission

Ecological Resilience
(restoration, fuels reduction)

Support all-lands efforts to restore and enhance forest health (e.g. ECOP)

Simplify or reduce permitting for projects that build ecological resilience

Fire Prevention
(keeping homes out of forests, education)

Prohibit or remove development from high risk and high severity areas (e.g. new MP policy)

Landowner outreach and partnerships (e.g. UCD)

Community Protection
(minimizing damage and losses)

Explore Fire Adapted Communities opportunities

Support emergency planning and services?